



# hCAP-G2 Polyclonal Antibody

<b>Catalog No</b>	YP-Ab-01757
<b>Isotype</b>	IgG
<b>Reactivity</b>	Human;Rat;Mouse;
<b>Applications</b>	WB;IHC;IF;ELISA
<b>Gene Name</b>	NCAPG2
<b>Protein Name</b>	Condensin-2 complex subunit G2
<b>Immunogen</b>	The antiserum was produced against synthesized peptide derived from human NCAPG2. AA range:561-610
<b>Specificity</b>	hCAP-G2 Polyclonal Antibody detects endogenous levels of hCAP-G2 protein.
<b>Formulation</b>	Liquid in PBS containing 50% glycerol, 0.5% BSA and 0.02% sodium azide.
<b>Source</b>	Polyclonal, Rabbit,IgG
<b>Purification</b>	The antibody was affinity-purified from rabbit antiserum by affinity-chromatography using epitope-specific immunogen.
<b>Dilution</b>	IHC: 1/100 - 1/300. ELISA: 1/40000.. IF 1:50-200
<b>Concentration</b>	1 mg/ml
<b>Purity</b>	≥90%
<b>Storage Stability</b>	-20°C/1 year
<b>Synonyms</b>	NCAPG2; LUZP5; Condensin-2 complex subunit G2; Chromosome-associated protein G2; CAP-G2; hCAP-G2; Leucine zipper protein 5; Non-SMC condensin II complex subunit G2
<b>Observed Band</b>	
<b>Cell Pathway</b>	Nucleus .
<b>Tissue Specificity</b>	Endometrium,Epithelium,Ovary,Testis,
<b>Function</b>	function:Regulatory subunit of the condensin-2 complex, a complex which establishes mitotic chromosome architecture and is involved in physical rigidity of the chromatid axis.,similarity:Contains 1 HEAT repeat.,subunit:Component of the condensin-2 complex, which contains the SMC2 and SMC4 heterodimer, and 3 non SMC subunits that probably regulate the complex: NCAPH2, NCAPD3 and NCAPG2.,
<b>Background</b>	non-SMC condensin II complex subunit G2(NCAPG2) Homo sapiens This gene encodes a protein that belongs to the Condensin2nSMC family of proteins. The encoded protein is a regulatory subunit of the condensin II complex which, along with the condensin I complex, plays a role in chromosome assembly and segregation during mitosis. A similar protein in mouse is required for early development of the embryo. Alternate splicing results in multiple transcript

variants. [provided by RefSeq, Aug 2013],

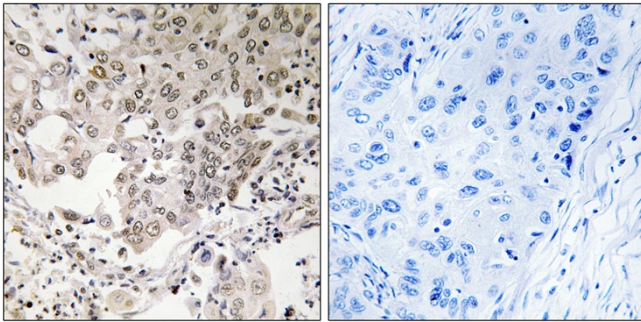
**matters needing attention**

Avoid repeated freezing and thawing!

**Usage suggestions**

This product can be used in immunological reaction related experiments. For more information, please consult technical personnel.

## Products Images



Immunohistochemistry analysis of paraffin-embedded human lung carcinoma, using NCAPG2 Antibody. The picture on the right is blocked with the synthesized peptide.